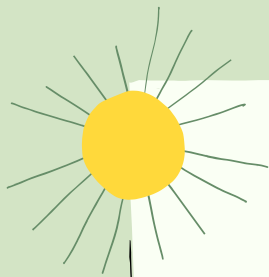


HOW TO START PLANTS FROM SEED

A STEP-BY-STEP GUIDE TO STARTING PLANTS FROM SEED

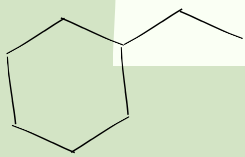


PURCHASE A TRAY WITH PEAT PELLETS

Pellets are purchased compressed and dehydrated

ADD WATER TO REHYDRATE

This may take several minutes. Be sure to add more water if needed. Once the pellets are rehydrated, peel back the mesh on each pellet.



PLANT YOUR SEEDS!



See the back of your seed package for instructions on the best time to plant seeds. TIP: For Zone 3 area (Regina, SK), the last frost is generally over the May long weekend. Plant your seed at the recommended depth (details on your seed package). Place your seed in the center of each pellet and cover.

LABEL YOUR SEEDS

If you're planting a variety of seeds be sure to label them.



FIND THE SUN!

Place a lid on your tray of peat pellets and seeds and find a warm sunny spot for them to grow. West or south facing windows are usually best for starting seeds.